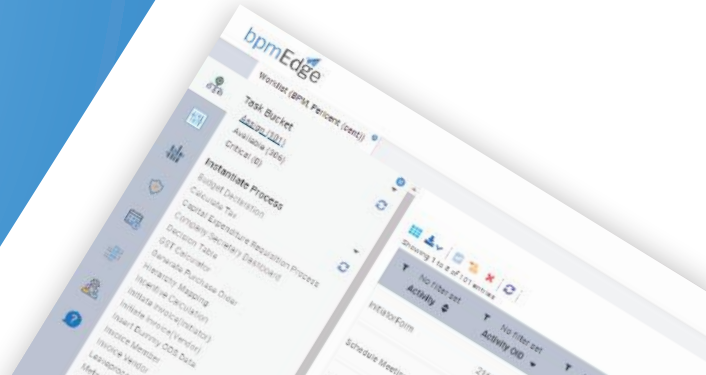


# Business Process Management System

## Everything is process






# Caution!

Great organizations get destroyed due to poor business process management.

To fight the external challenges, internal challenges of a business have to be overcome first.

The operational challenges eat up organizational strengths.



There are a lot of challenges that an organization faces in managing business processes. These can be hazardous for business-life.



# Designing a Digital Nervous System for Your Complex Business Processes

The human nervous system works unimaginably fast while transferring any message or notation to the brain. Our team has designed the structure of bpmEdge BPMS in a way that it speed-up your business process by creating a digital nervous system of the entire organization.

Once bpmEdge is implemented, your organizational workflow gets multiplied in terms of speed, efficiency, and effectiveness.



# What are these Operational Challenges?

---

Business Processes are very critical for every organization because a tiny error can invite big losses. Challenges come in, where the process is handled manually because it is a time-eater task yet an important part of any business.

Several challenges are commonly faced and are menacing to the growth of the business.

Unstructured  
Process

Unmonitored  
Business  
Activities


Non-Optimized  
Resources

Changing  
Policies


Gap in  
Technology  
and Business

Changing  
Business  
Models

M&A and  
Expansions  
Across  
Geography



I am equipped with the  
Legacy System!  
Why I need BPM?



Well! That's Smart,  
seems you embrace technology  
and advocate it further for your  
business growth.

CRM

ERP

SCM

CBS

### Legacy systems

Although legacy systems are matured and bring standardization in the processes, they are not able to match the pace of innovations in business model today.

# Challenges in Pure 'Legacy System' Approach

---



You will never want to put your business on risk! Security is a big question-mark in Legacy Systems.



They need extensive training and skills to be operated. Not user-friendly.



Complex, inflexible and expensive to modify. Hence, creates hurdles in process innovations.



Multiple legacy systems prevail within the same organization and integration to each other is painful for stakeholders.



Their incompatibility with modern software creates a great mess in modern businesses.



Not supportive of mobile devices - they lose work mobility.



Support and maintenance costs are too high. Eats up the ROIs.



Thinking of an Automated & Intelligent Tool  
that can wipe out all these issues?

---



**Don't worry!**

"Excellence and Efficiency is always the result  
when the stair to success is build with  
the blend of Experience and Intelligence."



# Meet bpmEdge

## A Comprehensive Business Process Management Platform

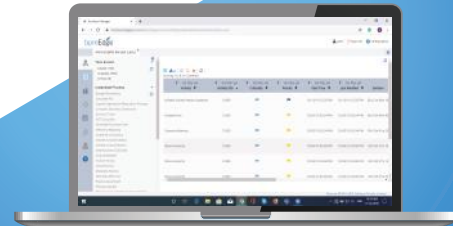
With rich industry experience and a robust knowledge base, Pericent has been making the business process easier for complex organizations. Since its launch in the year 2007, it has delivered more than 188 solutions on various major BPM platforms. By refining the blend of innovation expertise and excellence, it has built the best suite to ease the critical business process management.

## bpmEdge BPMS

One of the best Business Process Management Software with excellent built-in features aiming toward organizational success.

Helps to bring in intelligent automation to the business and gain efficiency & effectiveness.

Optional plug-ins for AI (Artificial Intelligence) & ML (Machine Learning).





# Limelight

Many industry leaders and giant entities adopted bpmEdge BPMS to get smart-automation to their business process.

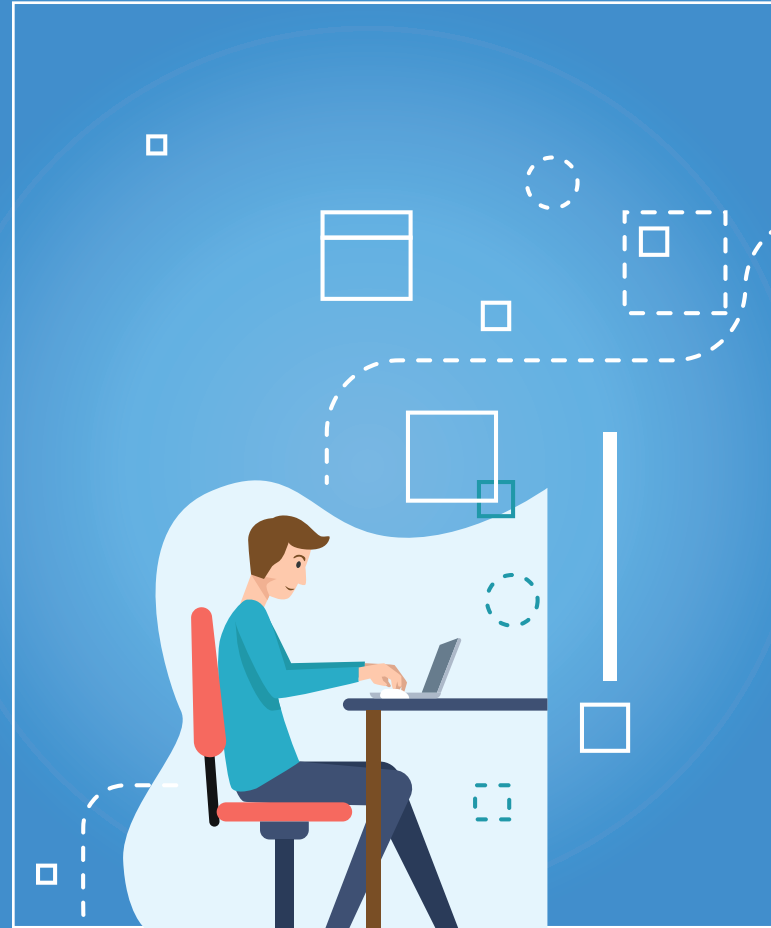
bpmEdge not only brings smart-automation to the business process but it strengthens the entire nervous system of the organization to boost up the workflow.



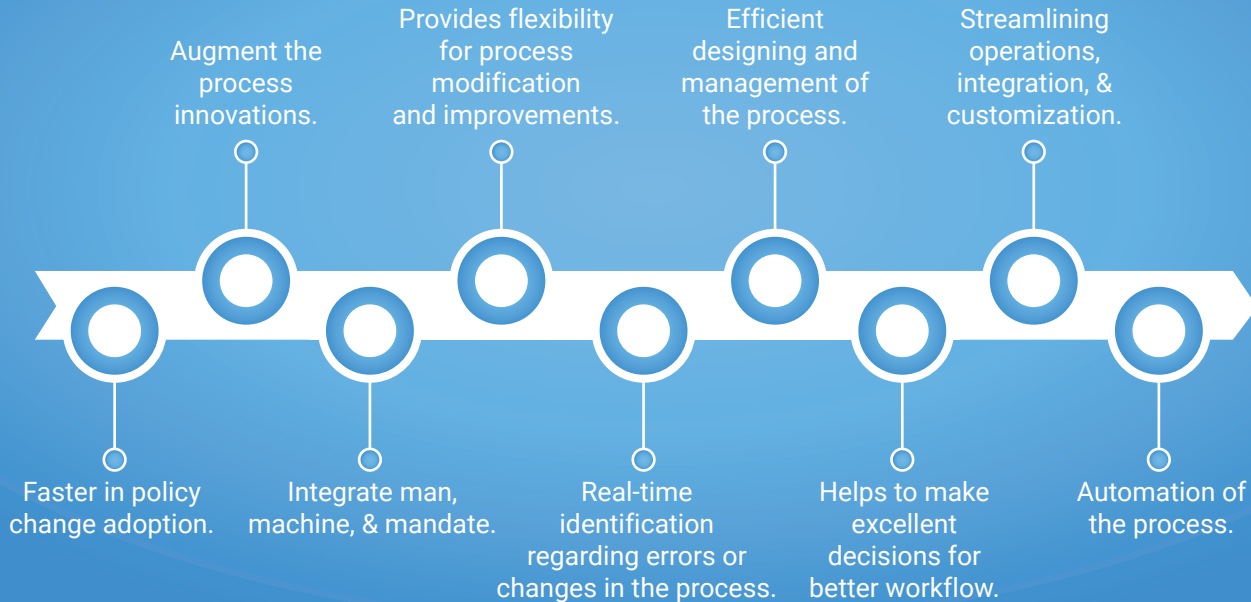
# Why bpmEdge?

bpmEdge is not just a BPM software, it is a technology paradigm that aids to ease complex business processes aimed at defining and modifying business processes with a deliberate objective of enhancing visibility and collaborative efficiency. It does the optimization of the process using an appropriate level of automation & controls, and also focuses on process measurement.

It enables the breaking down of silos sub-optimally caused by institutionalized workarounds, redundancies, and other repetitive process steps.



# Benefits of Hybrid Power-Packed Platform (Legacy System + bpmEdge)



# Architecture

---



**Modeler**

**RAD**

Rapid Application  
Development

**Simulation**

## Modeler

- ✓ Modeling of processes in Business Process Modeling Notation (BPMN).
- ✓ Perspective for process modeling including an Analyst and a Development Perspective.
- ✓ Importing and exporting functionality of process models into the XML Process Definition Language (XPDL).

## Rapid Application Development (RAD)

- ✓ The Rapid Application Development (RAD) approach is the fastest and easiest way to get familiarize.
- ✓ The RAD approach allows deploying a Dynamic Web Project including facets for a complete runtime environment in a Web Server running within Eclipse.
- ✓ Immediate testing of Process Models and their integration with other deployment artifacts (like Java Classes, Web Services, Java Server Faces) can be done.

## Simulation

- ✓ Process simulation allows a process model to be tested for performance characteristics without actually deploying the process to the runtime environment.
- ✓ Fast in-memory algorithm performing thousands of processes for a simulation period of possibly years in a second is used for simulation.
- ✓ Each simulation runs in a hypothetical (what-if) test that varies in parameters such as work volume, workers availability, and provide a performance summary of the process design under those conditions.

## Process Model



Business Process Modeling Notation (BPMN)



Analyst & Development Perspective



Import & Export Functionality into XML Process Definition Language (XPDL)



Comprehensive, Smart, & Excellent Process Modeling  
Always Helps Achieving Great Targets Effectively.

## Activities



Determines the flow of tokens through tasks and conditions



Modification and access to business data during the execution of the process



All business roles are mapped to execute various interactive activities



Business Process Modeling Notation (BPMN 2.0) Support

Activities that always provide real-time tracking of organizational workflow and help in improving the same.



## The Platform

- ✓ Workflow execution for organization end users
- ✓ Benchmark to monitor the process execution status in Control Center
- ✓ Auto monitors activity importance count associated with processes
- ✓ Designs Gantt Chart of the process instance and monitor status of activities
- ✓ The reporting perspective for creating and viewing process reports
- ✓ Rule manager for business rule management and decision table management

Web-based portal with support for modern technologies like AJAX with all five perspectives.

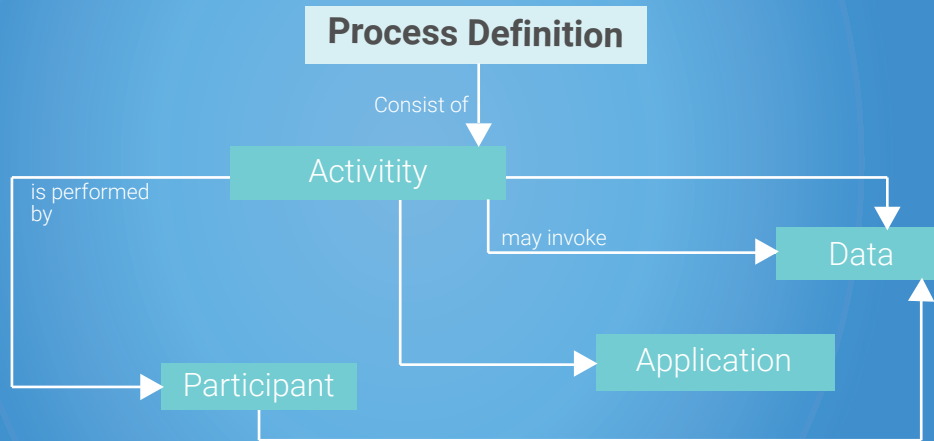




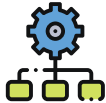


Seamless automation of the process with activities, sequence, data and data flow, invoked applications, and workflow participants.

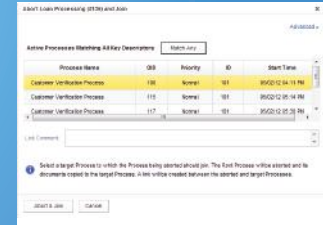
## Enhanced Process Management



## Process Mechanics



- ✓ Aborting Process Instances
- ✓ Aborting a process and starting a new instance
- ✓ Aborting and joining processes
- ✓ Spawning processes
- ✓ Grouping root process instances under a new case process
- ✓ Viewing and editing case process details
- ✓ Searching for related processes and cases
- ✓ Recovering process instances
- ✓ Modifying process priorities



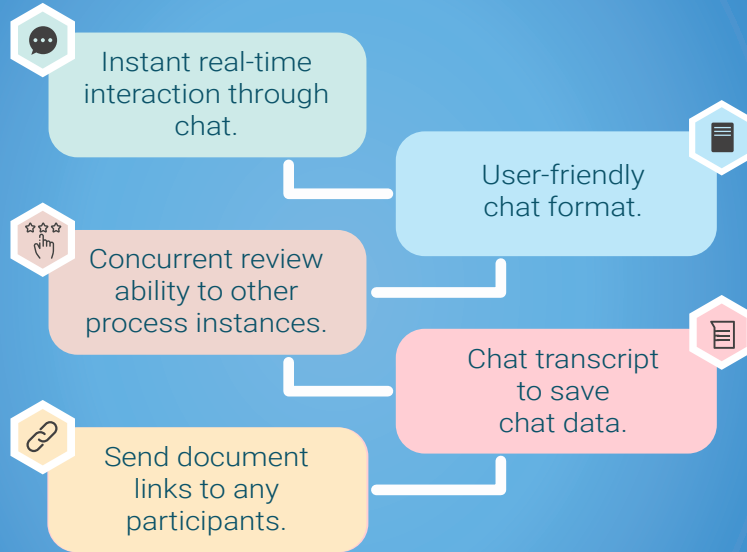
## End-to-End Process Management



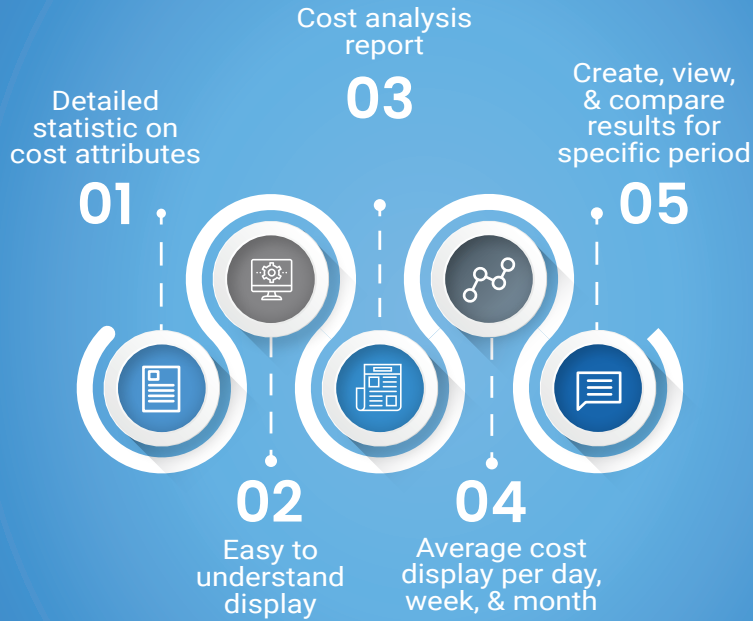
An intuitive and collaborative BPM tool that shapes up the business process according to organization's targets and expectations while maintaining standardization, compliance, and cost-effectiveness.



## Chat With Team



## Cost Controlling



## View & Edit Notes



Invoke notes from the Activity Execution View Toolbar



Invoke notes from Action columns in Tables



Check existing notes on any content



Add a new note to process content



Note list to view all notes on any process-content

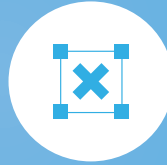


## Benchmark Definitions

Compare any process or task with others to know the variability. Benchmark the best process performance and evaluate the current task/process to know the loopholes and know the way to standardize the performance for bigger achievement each time.



Managing & Designing  
benchmark definitions



Edit or delete existing  
benchmark definitions



Add new benchmark  
definitions



Clone, publish, upload,  
& download benchmark  
definitions



## Report Management



Access and manage various reports



Tree-entry display to view different report folders



Private, Public, Administrator, and Role-Specific Reports



Creating report sub-folders



Rename, version, download, upload, & delete reports



Manage security for any report





## Workflow Management



View and manage participant's assignments and roles



Manage deputies of projects



View worklists and worklists table



Check availability of resources and currently assigned roles



Team members' log-in time



Activities and performance of the participants



## Rules & Policy Management

- ✓ Define the set of business rules and policies
- ✓ Create and manage decision tables
- ✓ Creating rule sets in My Rule Sets Tree
- ✓ Editing Rule Sets properties



## Monitor Criticality of Activities

Monitor criticality count of the activities associated with processes in deployed model. Top three criticality categories are displayed by default.

High

Medium

Low

Criticality



## Everything on Your Mobile

### Monitor everything in the process on your finger-tip anytime from anywhere.

User-friendly mobile portal to ease the critical workflow of process management.

Additional mobile-specific features to leverage native mobile device functions.

Capture image from mobile and attach to the process.

Add process notes using the built-in microphone.

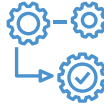
Send emails to process participants directly from the mobile device



**Mobility  
Enhanced**



Viewing activity  
details



Viewing Process  
Details



Adding & Viewing  
Notes



Using the interactive  
activity form



Adding & Viewing  
attached documents



Delegating  
Activities



## Intelligent Automation

- ✓ Artificial Intelligence
- ✓ Fast & Accurate Results
- ✓ Immediate Response
- ✓ Integrated Decision Matrix
- ✓ Integration of AI & ML



## Automate Decisioning



Business Rules Engine (BRE) helps to automate the decisions and speed up the entire process.



Trigger next task depending on the current task  
Automates workflow management cycle  
Enhanced efficiency & accuracy



## Adaptive Case Management



Process Management  
and Case Management  
Together

01



Eliminate  
work  
blockage

02



Streamline  
workflow

03



Manage  
unstructured  
process

04





Let the software robots complete the repeated tasks  
and save your time.



Digital Worker Automation



Rule-based Robotic Process



Handles Rule-based OCR Text Processing Tasks



## Unstructured Process

bpmEdge is built to simplify the complex and unstructured business processes.

Dynamic

Collaborative

Analysis  
Driven

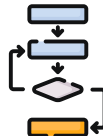
Content  
Intensive



## Low Code Development



Smart & Low Code Development helps the user to understand and access various insights into the platform.



Contribute to development with formal programming skills  
Let the process work exactly the way you want,  
No rocket-science coding.



# Easy to Understand UI

Business Manager

trial.bpmedgepro.com/bpmEdge/main.html#/bpm/portal/Ext/processOverviewView\_all\_

bpmEdge

cent Sign Out Configuration

Overview

Favorite Reports  
No items to be displayed

Costs and Controlling

Processes  
Overview  
Advance Search  
Traffic Light  
Benchmarking

Business Object Management  
Business Object Management

Activities  
Criticality Manager  
Pending Activities  
Completed Activities  
Postponed Activities  
Stranded Activities

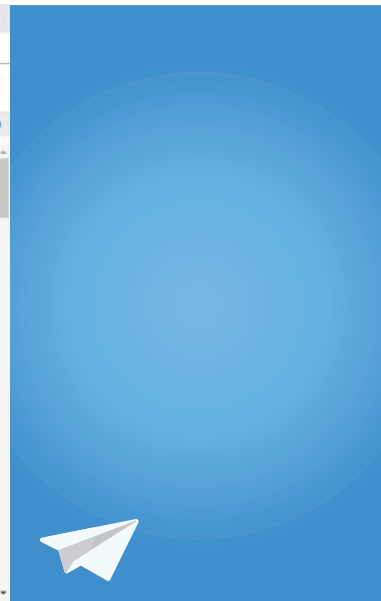
Resources  
Resource Availability  
Role Assignments  
Deputy Management  
Resource Login

Priority Overview

No filter set

Name	Status	Interrupted	High Priority		Normal Priority		Low Priority		Total		Role
			Total Count	Critical Count	Total Count	Critical Count	Total Count	Critical Count	Total Count	Critical Count	
Account Payable Model			15	0	0	0	40	0	55	0	
Budget Declaration			15	0	0	0	0	0	15	0	
Generate Purchase Order			0	0	0	0	35	0	35	0	
Vendor Evaluation			0	0	0	0	5	0	5	0	
Asset Management			0	0	0	0	0	0	0	0	
Manage Asset			0	0	0	0	0	0	0	0	
Board Meeting			0	0	23	0	0	0	23	0	
Company Secretary Dashboard			0	0	17	0	0	0	17	0	
Create Agenda			0	0	0	0	0	0	0	0	

Pescent BPM & DMS Software Private Limited



## Excellent After-Sale Support



Full-time support from skilled and industry experienced personnel.



Technical support for hassle-free process flow.



On-call, emails, cloud assistance.



We are with you forever.



# Do you think that a robot should do all your task?

Well, the increasing pace of technological advancement is no doubt like a miracle every day. But, evading human interference completely is not what going to be a success map.

Artificial Intelligence and Machine Learning technology are attractive but we think the best results could only be achieved with the involvement of human intelligence. Our product bpmEdge BPMS is designed with all featured technology advancements and is a robust solution to an unstructured and complex business process.



# WE PUT EFFORTS TO LET YOU SAIL EFFORTLESSLY

Worked for top brands  
as well as global clients



## A Product Developed by Skilled and Experienced Team

Established in 2007, PERICENTR is a preeminent software development company in India and specialized in developing and delivering customized services and solutions that cover the full application development life-cycle.

PERICENT is a team of skilled and highly experienced Business Analysts, Software Architects, Programmers, UI/UX Designers, Project Managers, & Testers, who are constantly delivering technology innovations. We are armed with immense experience of 188+ solutions for the JAVA platform, Business Process Management (BPM), and cloud computing for our clients across the globe. Our core competency is designing and developing complex yet user-friendly solutions for both enterprises and start-ups. We've also developed 153 mobile applications (Android, iOS, Windows Platforms).

[www.pericent.com](http://www.pericent.com)

Synargy of Man Machine and Mandate



#LoveOfProcess



**Pericent BPM & DMS Software Pvt. Ltd.**

**INDIA Office**

69/279, V.T. Road, Mansarovar,  
Jaipur-302020, INDIA



**INDIA +91 6375406249**



**contact@pericent.com**



**www.pericent.com**

**Global Sales**    USA | UK | UAE | SWEDAN | BRAZIL

**NASSCOM®**  
OFFICIAL MEMBER

**ISO** 9001:2015  
Certified

**ISO 27001**